

# Hall Farm

## Wardlow

Grade II listed 17th/19th century Farm House. It was significantly altered in previous renovations. Our brief comprised making good unauthorized external and internal works, repair and upgrade as a well designed sustainable family-house, to improve the environmental performance of the building, maximize the use of passive solar energy, reinstate conservatory, to install micro-generation systems, reinstatement of the lost attic accommodation, reinstatement of original staircase and plan configuration.

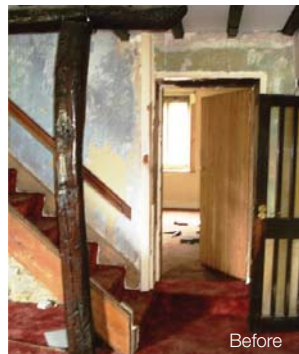
The listed building that had suffered the ravages of time - Hall Farm has been spectacularly transformed by both traditional craftsmanship and modern technology into a sustainable family-house. Passive solar energy has been utilised with a south facing conservatory and bronze flashed photovoltaic panels on the roof of the south-facing kitchen. Ground source energy to heat pumps was provided, rainwater is recycled to WCs and irrigates the productive-garden. New mullioned gritstone windows replaced UPVC windows. Traditional materials were utilized in the repairs, including slaked lime plaster and limewash.

The project was a finalist in the Grand Designs Awards 2010 'Best Eco Home' category.





# Hall Farm Wardlow





# Hall Farm Wardlow

